



Photo 1: General view of the site, from the east (church to right, outbuilding to left)



Photo 3: South-east elevation of the church



Photo 4: South-east elevation of the church, and caretaker's house to right



Photo 9: Foundation stone in south-east elevation, laid by Mrs A Harrison





Photo 14: Sign next to school room entrance



Photo 15: North-west elevation of the church



Photo 17: North-west elevation of the church: main entrance



Photo 18: North-west elevation of the church: inscription over main entrance





Photo 29: Main entrance lobby to church: newel post to staircase

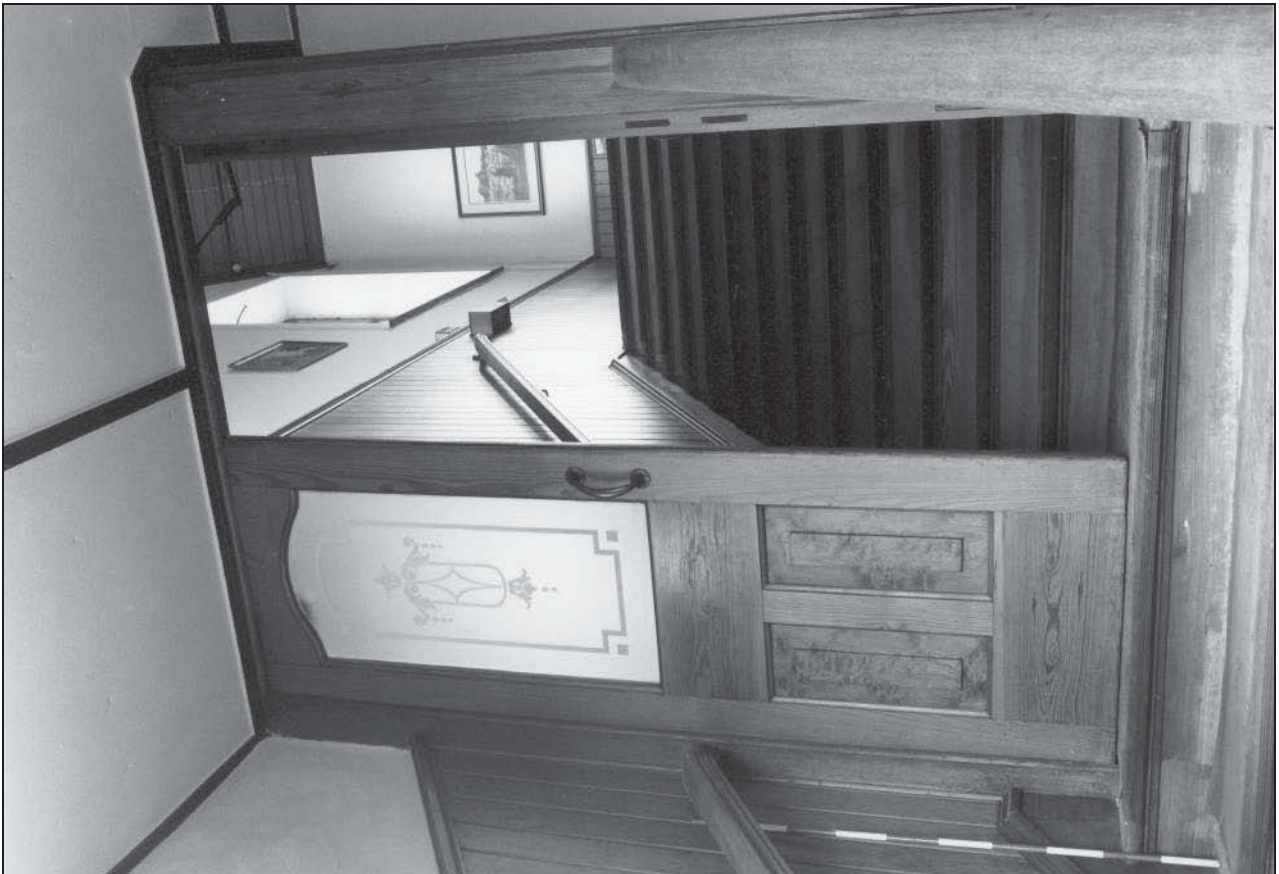


Photo 27: Stairs leading up to the chapel from entrance lobby



Photo 31: Main entrance lobby to church: detail of ceiling



Photo 33: The chapel, from the north-east end





Photo 35: The chapel, from the north



Photo 37: The chapel, from the west



Photo 39: The chapel: detail of pews



Photo 40: The chapel: dais and pulpit





Photo 43: The chapel: detail of pulpit



Photo 44: The chapel: detail cranking mechanism in pulpit to raise lectern height



Photo 45: The chapel: dais, choir stalls and organ

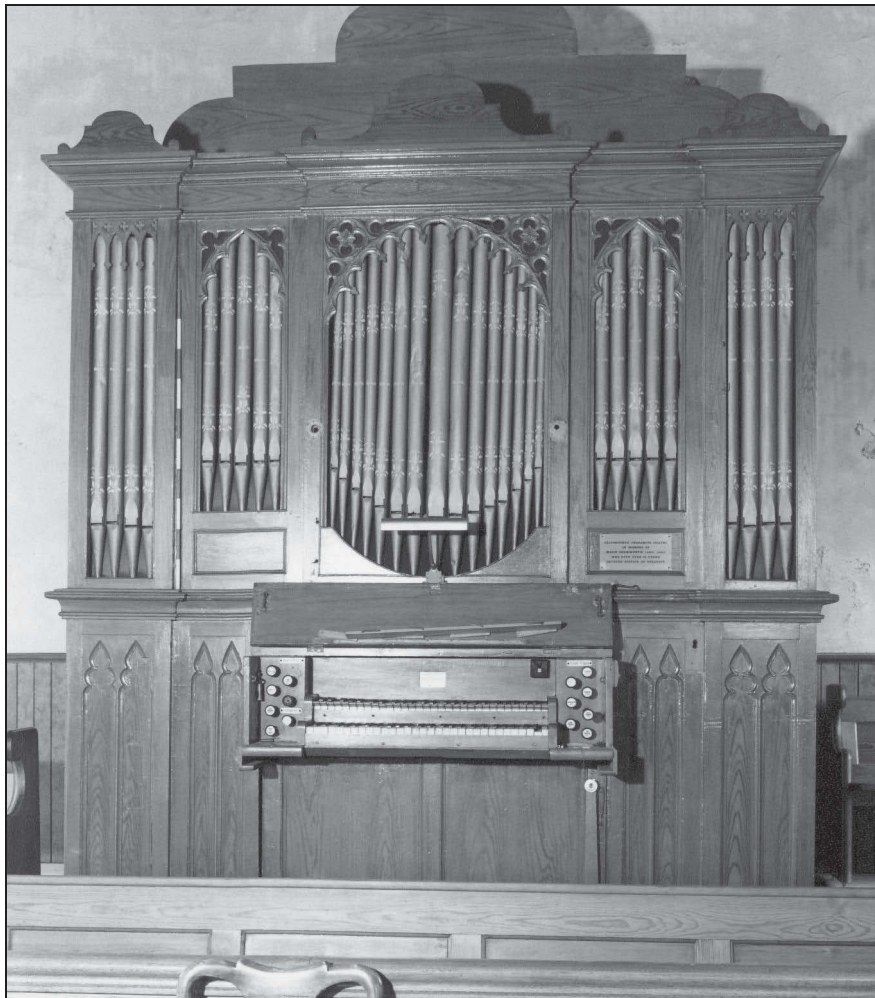


Photo 47: The chapel: detail of organ





Photo 49: The chapel: rear of organ, showing lever for bellows



Photo 51: The chapel: detail of chandelier

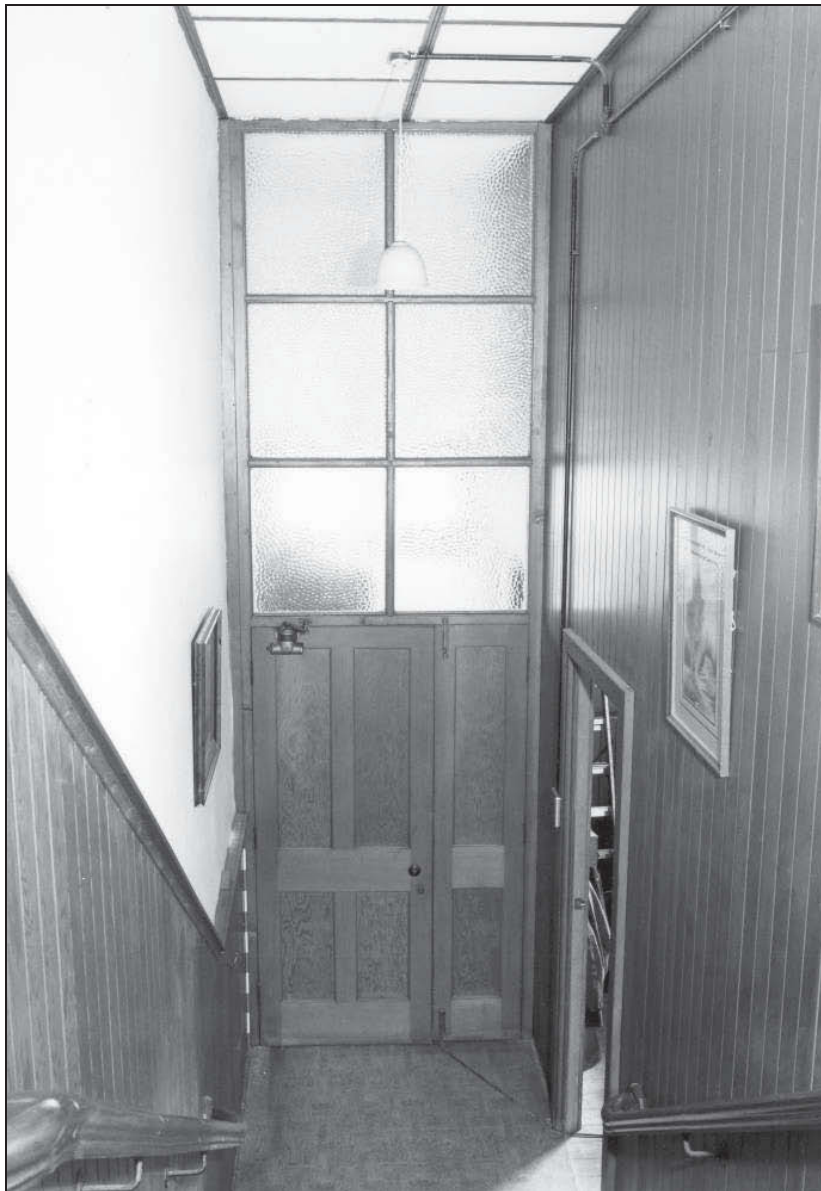


Photo 56: Ground floor of chapel, showing lobby to school room



Photo 60: The school room, from the east





Photo 62: The school room, from the south-west

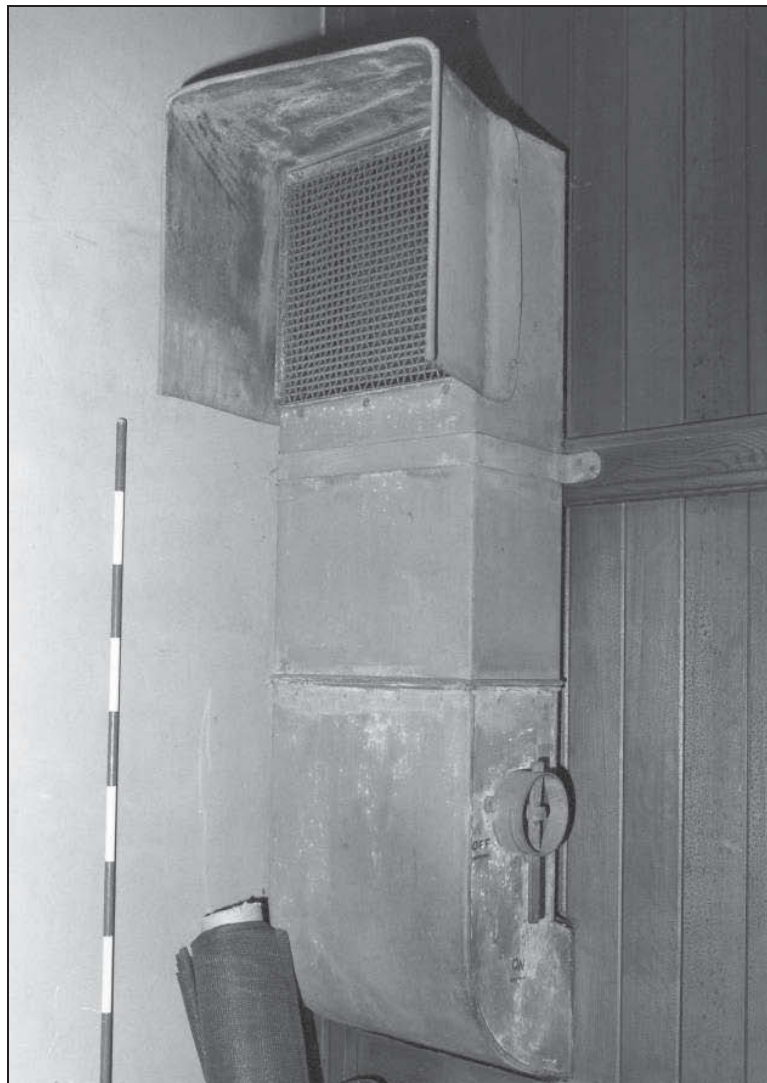


Photo 65: The school room: detail of hot air duct



Photo 70: Stairs down from the choir stalls and pulpit



Photo 67: Detail of door to minister's vestry





Photo 74: Caretaker's house: living room fireplace



Photo 76: The outbuilding, from across Earby Road

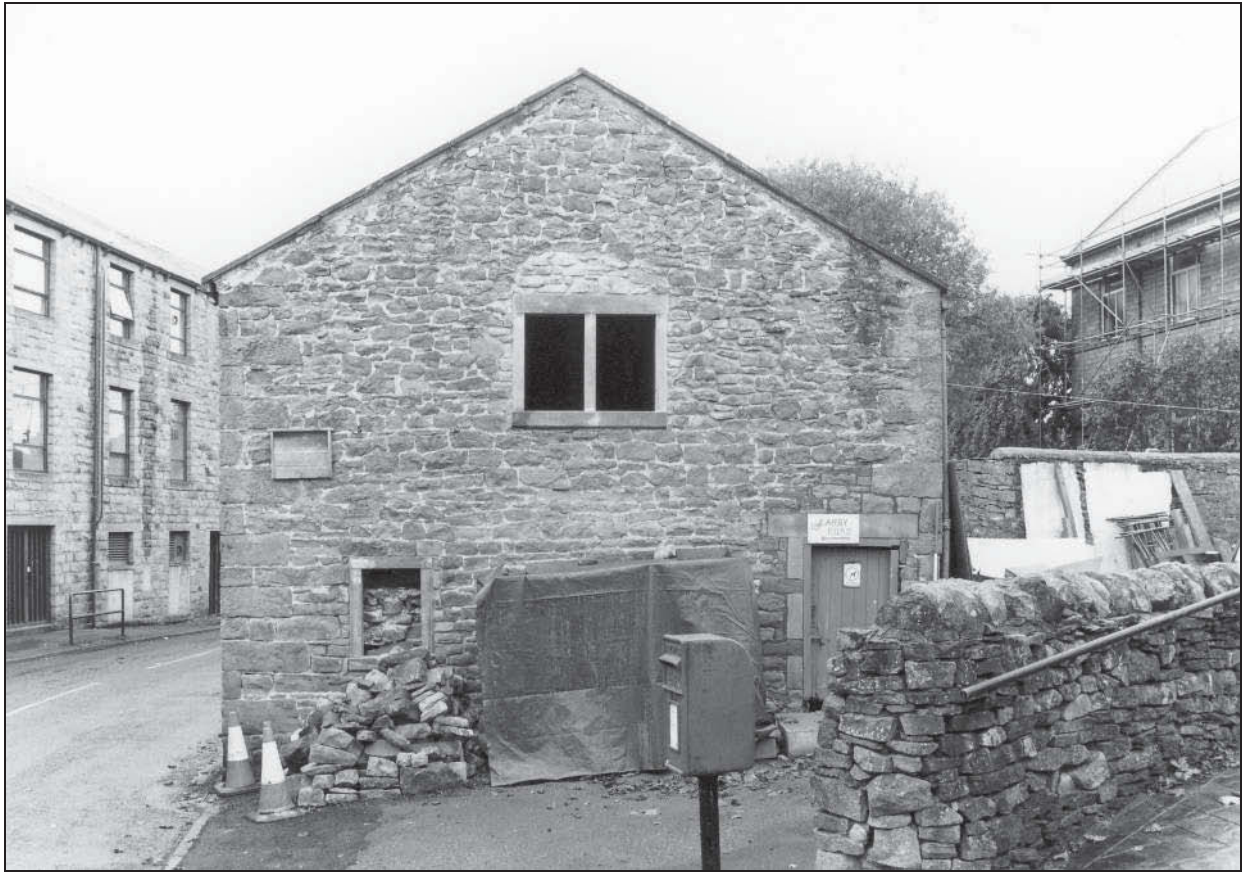


Photo 78: The outbuilding: north-east elevation



Photo 80: The outbuilding: from the west





Photo 81: The outbuilding: ground floor, from the north-west



Photo 88: The outbuilding: first floor fireplace





Photo 89: South-east graveyard, from the west



Photo 91: South-east graveyard, from the south





Photo 93: South-east graveyard: memorial to Henry Hartley



Photo 95: South-east graveyard: memorial to William Pollard