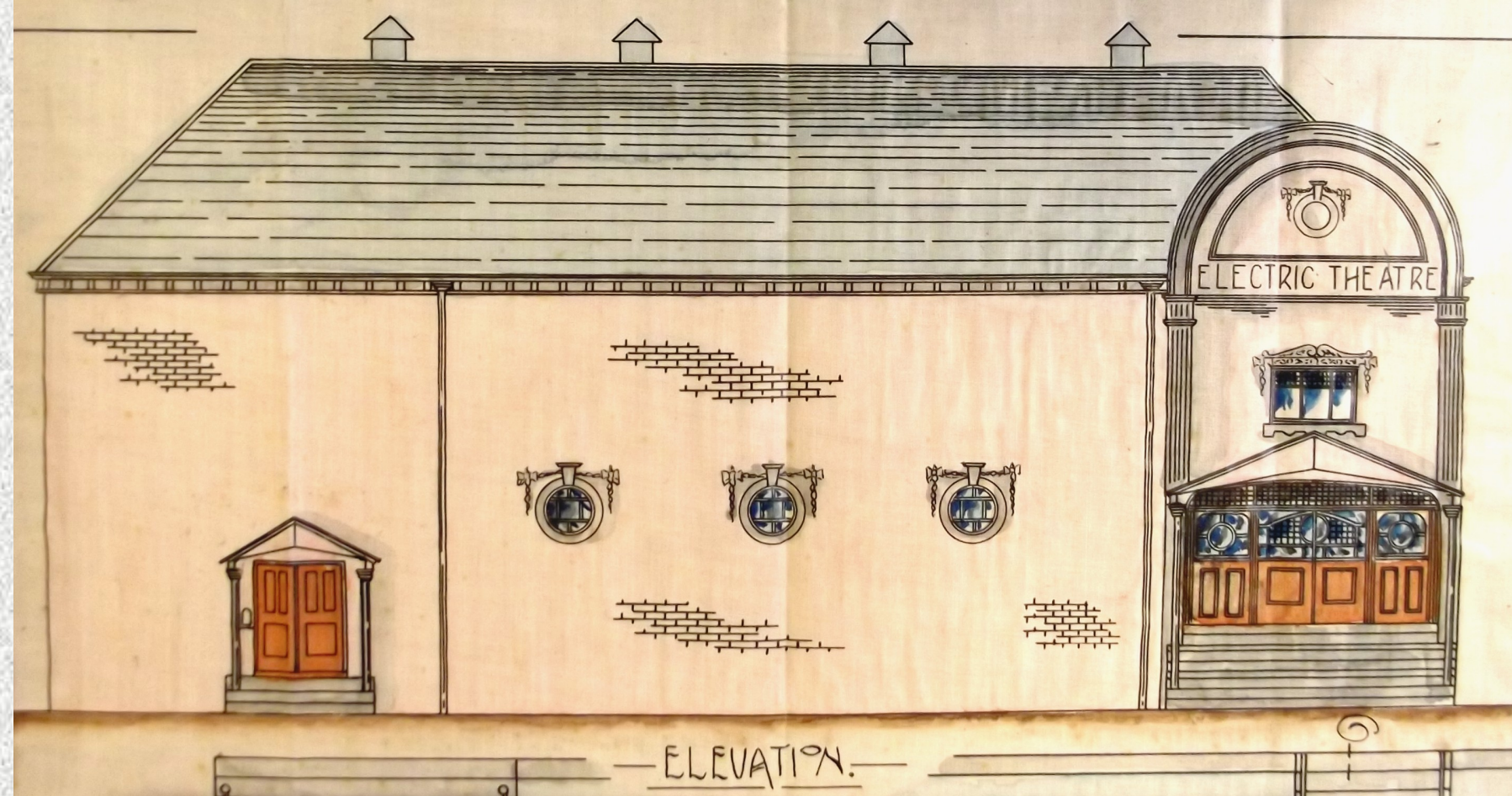


# EARBY ON THE CUSP OF WAR

In the years just before the outbreak of World War I, Earby was a thriving and growing community. Despite the normal vicissitudes of the textile industry, Earby was a vibrant, confident town. There were many developments planned, a number of which were aborted with the outbreak of war. Following the war there was an initial surge in textile production as depleted stocks were replenished but overseas markets had been lost due to the interruption of supply to the export market and production being set up abroad. The textile industry and Earby never really recovered to its pre-war position.



PLAN OF PROPOSED ELECTRIC THEATRE  
—SCHOOL CAUSEWAY—  
—EARBY—  
—F. DIEGEL Esq.—

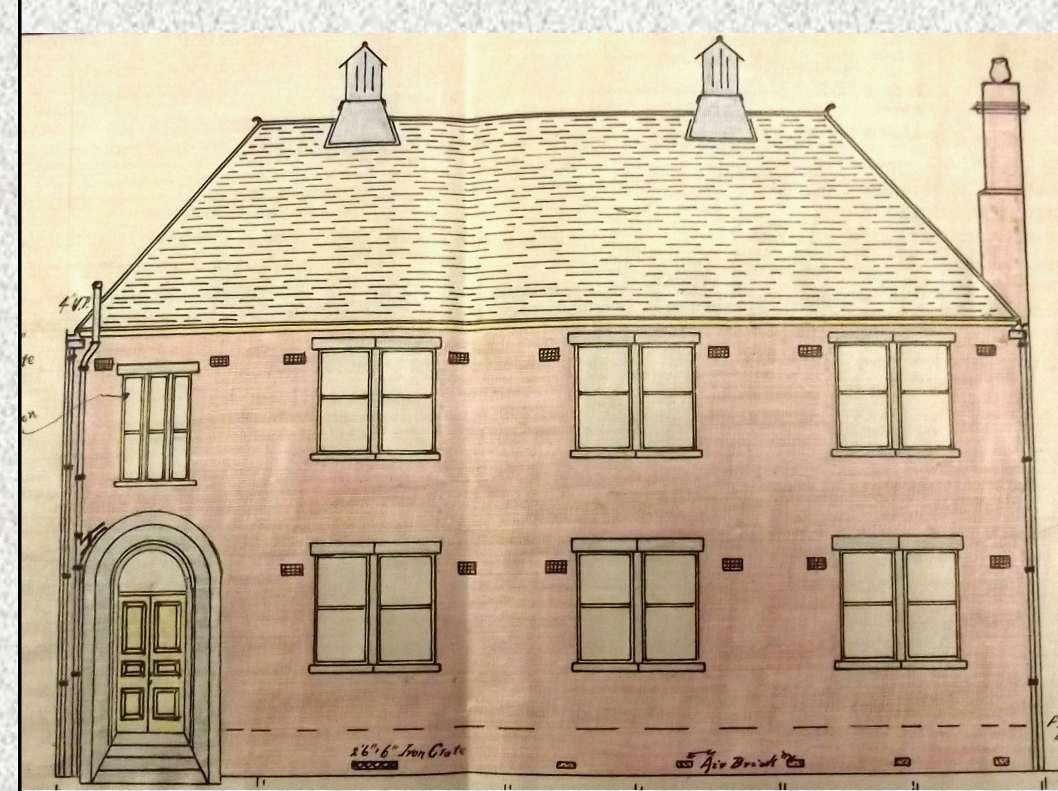
**EMPIRE CINEMA**  
The Empire Cinema was built in 1913. The illustration is from the original planning application.

(Courtesy of Lancashire Archives)

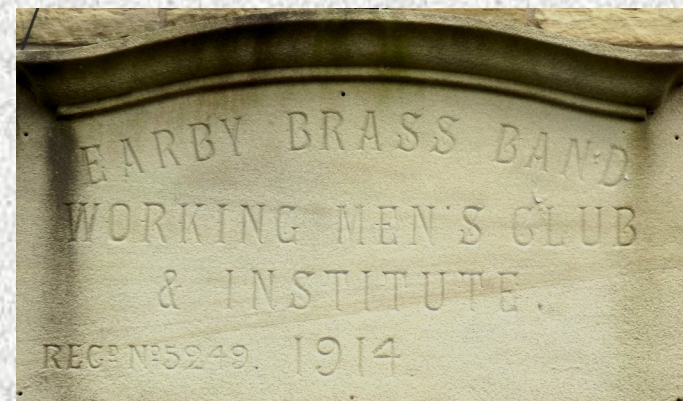
## EARBY'S WEAVERS INSTITUTE



The last mill to be built in Earby was Brook Shed on New Road in 1906. By now there were enough weavers in the town to justify the Colne and District Weavers Association erecting a purpose built Weavers Institute in Cross Street. The illustration above is from the architects drawings of 1908 (Courtesy of Lancashire Archives)

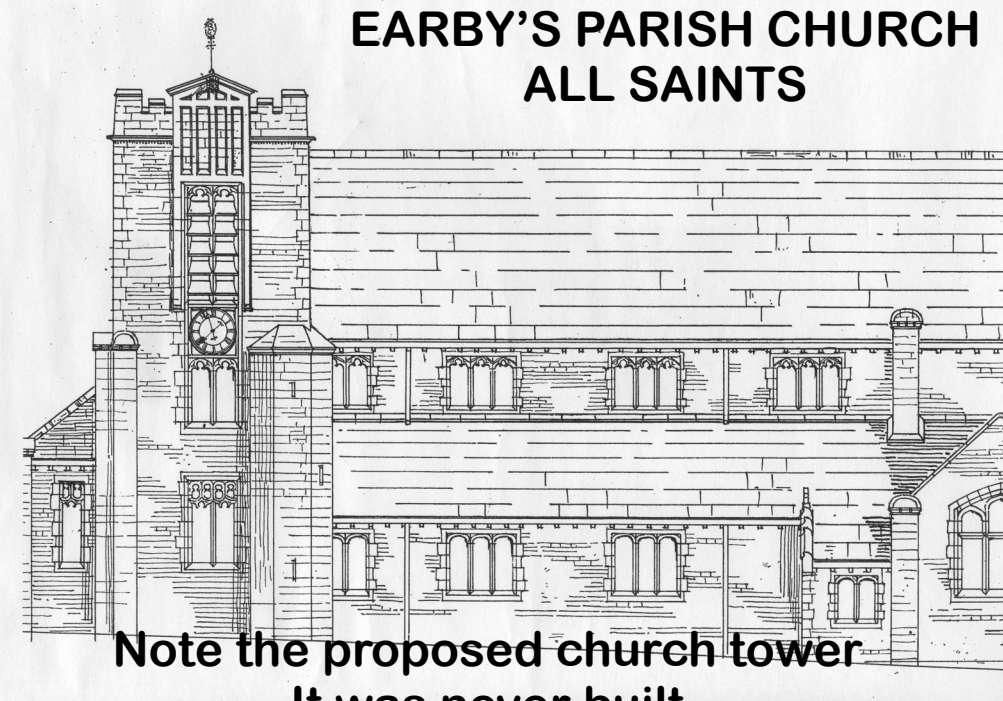


## EARBY BRASS BAND



The Brass Band had been in existence for about 73 years and in 1914 the members were confident enough to embark on the construction of their own club building.

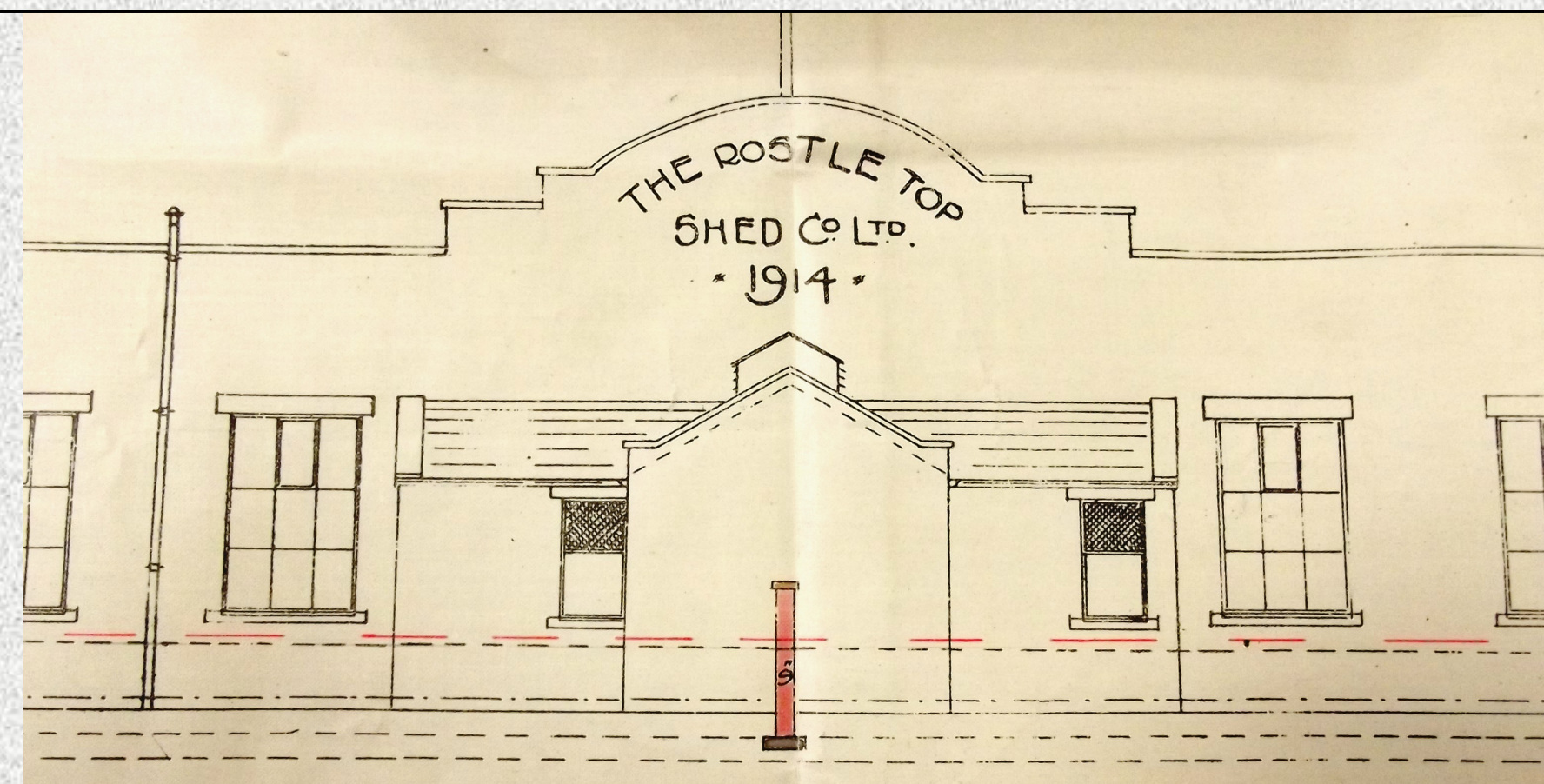
## EARBY'S PARISH CHURCH ALL SAINTS



Note the proposed church tower  
It was never built

At the beginning of the 20th century there was the need for a new Anglican church to serve the growing population. On 28th September 1906 a meeting of church people was held in the Albion Hall, Earby, to discuss proposals for a new church. It was resolved that a new substantial church be built of stone would be erected. Fund raising began which resulted in the consecration of the new church in 1909

# Projects Halted by the War



## PROPOSED ROSTLE TOP SHED

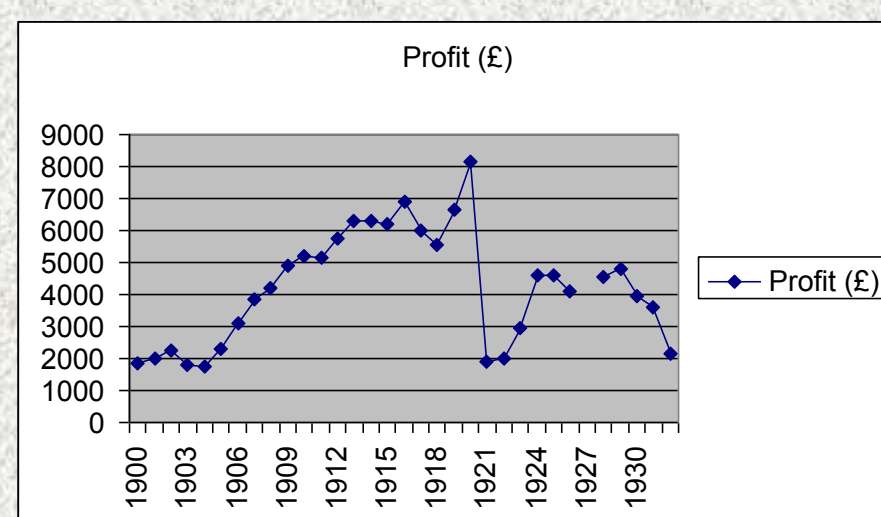
Such was the confidence of local manufacturers, a new company, The Rostle Top Shed Co. Ltd., was proposing a large new weaving shed. Probably on the basis that the war was to be over quickly, the planning process continued into 1915 when approval was granted. The site was to be between Colne Road and the New Cut, on the Colne side of Linden Road. Plans also showed provision of terraced housing for the workers.

Another mill was proposed for Linden Road in 1926 for WN Berry and Sons, again the scheme came to nothing

**THE ROSTLE TOP SHED**  
Co. LTD.  
NEW WEAVING SHED AT EARBY.

## EARBY CO-OPERATIVE BAKERY

From 1900 to 1913/14 the Earby Co-operative Society had been seeing increased profitability year on year. Confidence was high and a grandiose plan for a new co-operative bakery on their Water Street site was put forward. Once again the War intervened. With problems of food supply and rationing, profits began to dip and the project was abandoned. In fact the Co-op never really recovered post war and in 1933 it merged with the larger Colne Co-operative Society



The Earby Co-operative Society annual profits



The proposed new bakery in Water Street  
(Courtesy Lancashire Archives)

A LODGING HOUSE with 100 beds, for itinerant weavers, was proposed for Cross Street, to alleviate the housing shortage in Earby. It was never built.

