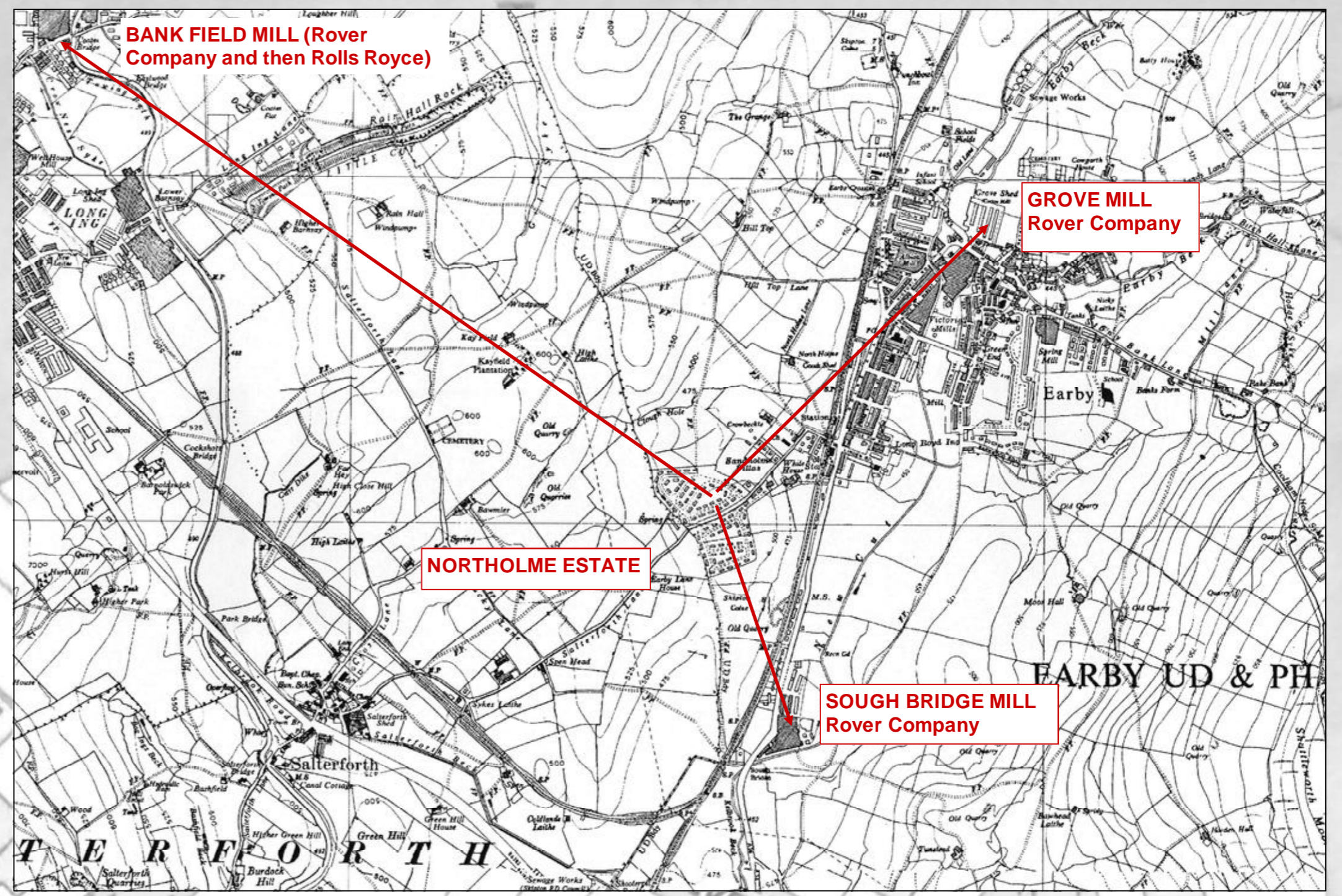


PEOPLE

Where they worked

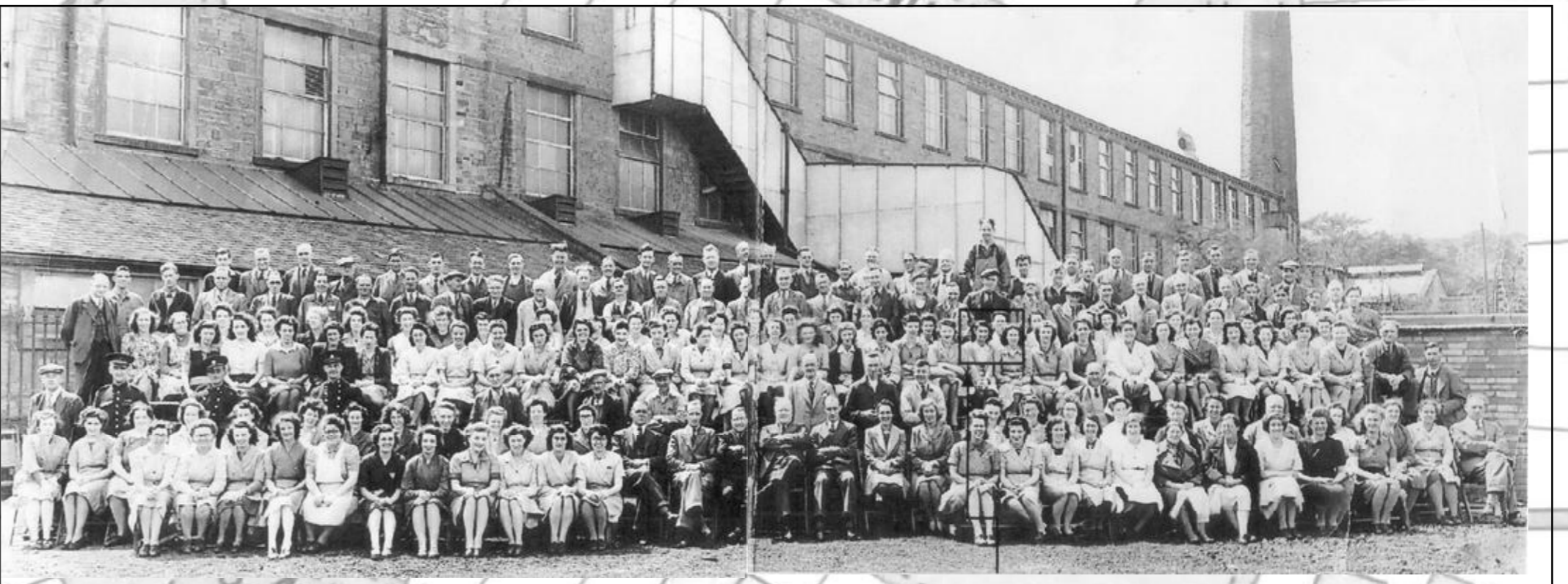


With the Appreciation of the management of the Rover Company Ltd., for our Joint War Effort 1939-45
GROVE MILL



With the Appreciation of the management of the Rover Company Ltd., for our Joint War Effort 1939-45
SOUGH BRIDGE MILL

The Northolme Estate was central in respect to the shadow factories at Grove Mill, Sough Bridge Mill and Bankfield Mill, Carleton Mill further to the east.



With the Appreciation of the management of the Rover Company Ltd., for our Joint War Effort 1939-45
CARLETON MILL

Below are a selection of photographs from former residents of the Ranch taken from the Ranch section of the Earby and District Local History Society's web site (www.earbyhistory.co.uk) where there are more photos on display.

Many families came and went some to other parts of the area, some back to the Midlands. Some stayed and moved from the prefabs into the newly built houses of the 1950s. Another influx of people, after the war, were Rolls Royce workers.

